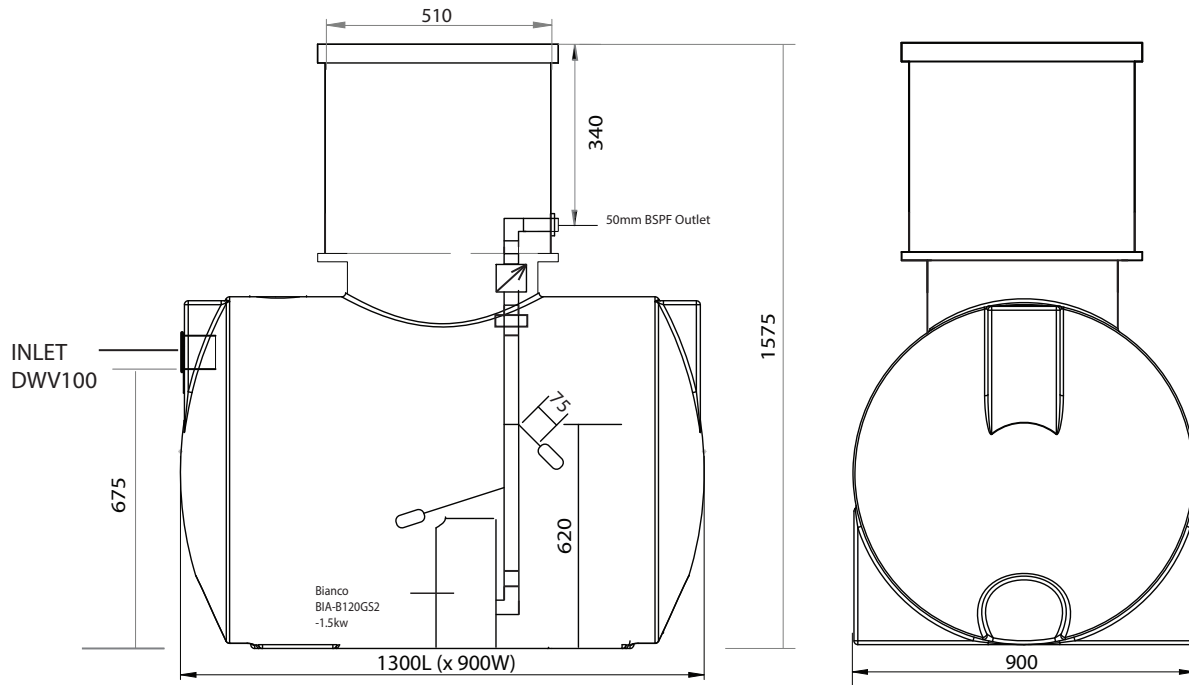




DEVAN 850L MACERATING PUMP STATION



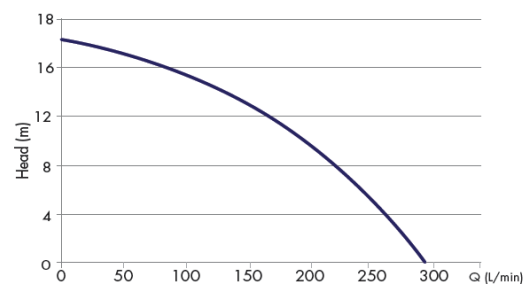
Application and Use

For efficient pumping of domestic wastewater suitable for pumping to council sewer lines when fall is not available on site.

Specifications

Code: DW850PMAS
Max. Vol: 850L
Voltage: 240 V/50Hz
Pump: Bianco BIA-B120GS2 - 1.5kW
Discharge: 50mm BSP
Max Head: 16m
Flow: 12.5m³/h @ 8m Head
Alarms: High Level with mute reset
Effluent quality: Macerated untreated sewage
Conforming Standards: AS/NZS3500.2.2018 Section 12.8*

Performance Curve



* compliance to AS/NZS3500.2.2018 Section 12.8 requires the supply installation of an isolation valve and minimum DN50 vent fitted by others

Features and Benefits

Light weight modular system
Simple proven technology

Maintenance

Maintenance requirements are as per your local authority or as required pump servicing, grinder replacement and high level alarm testing.